



# TIPS OG TRIKS

Teams Meeting 6 November 2023

Lena Lundell - Infoteam

Björn Torold, Magnus Tallqvist - Infor

# Disclaimer

This presentation reflects the direction Infor may take with regard to the products or services described herein, all of which is subject to change without notice. This presentation is not a commitment to you in any way and you should not rely on any content herein in making any decision.

Infor is not committing to develop or deliver any specified enhancement, upgrade, product, service or functionality, even if such is described herein. Many factors can affect Infor's product development plans and the nature, content and timing of future product releases, all of which remain in the sole discretion of Infor. This presentation, in whole or in part, may not be incorporated into any agreement. Infor expressly disclaims any liability with respect to this presentation.

# Dagens ämnen

Introduktion

Det bästa från M3 Connect – ”Mission impossible”

Huvudpresentation observationer

Arkitektur framtid

M3 Administration

Användarupplevelse

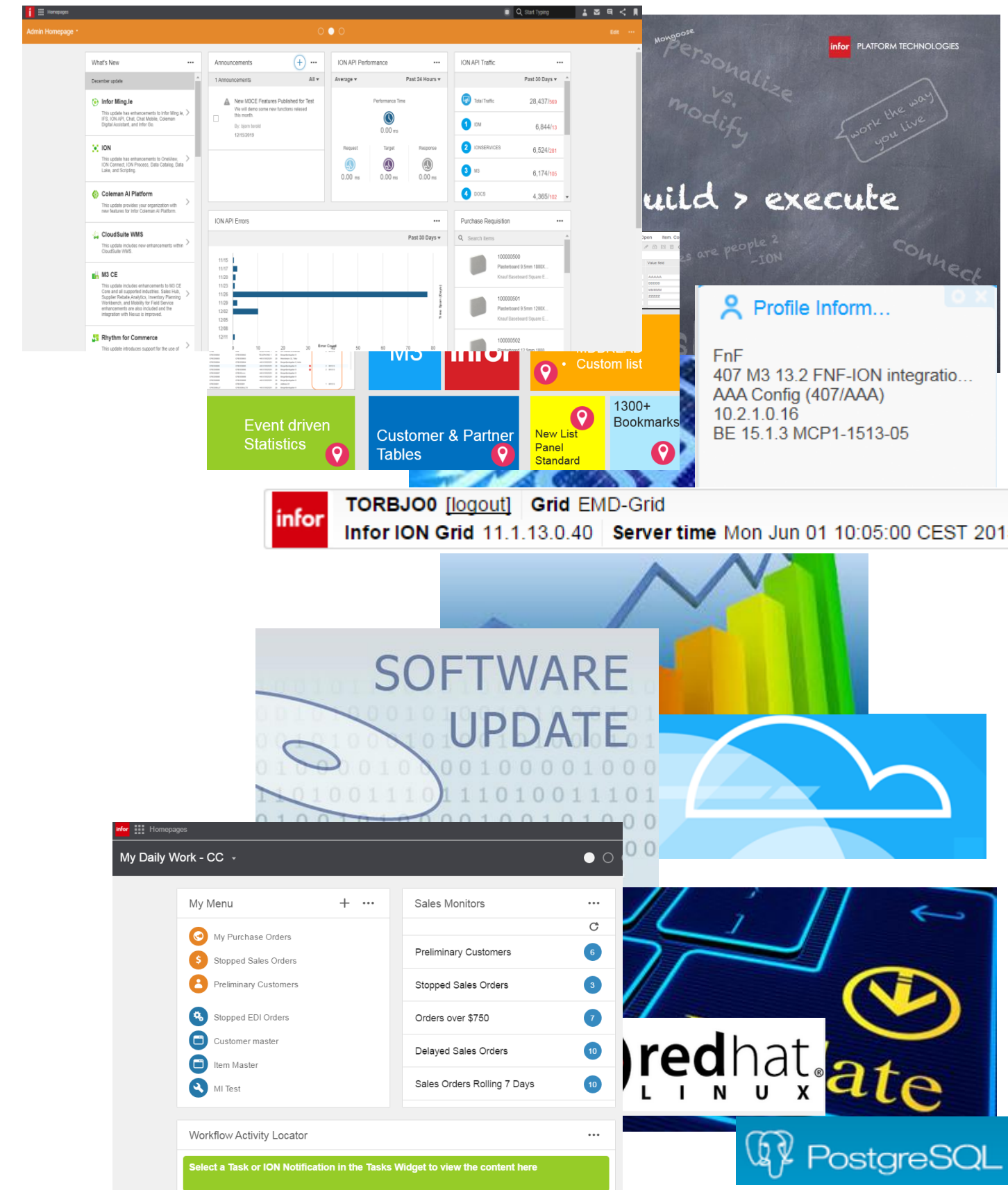
Integrationer

Dokument

Verktyg för kundunika och molnsäkrade anpassningar

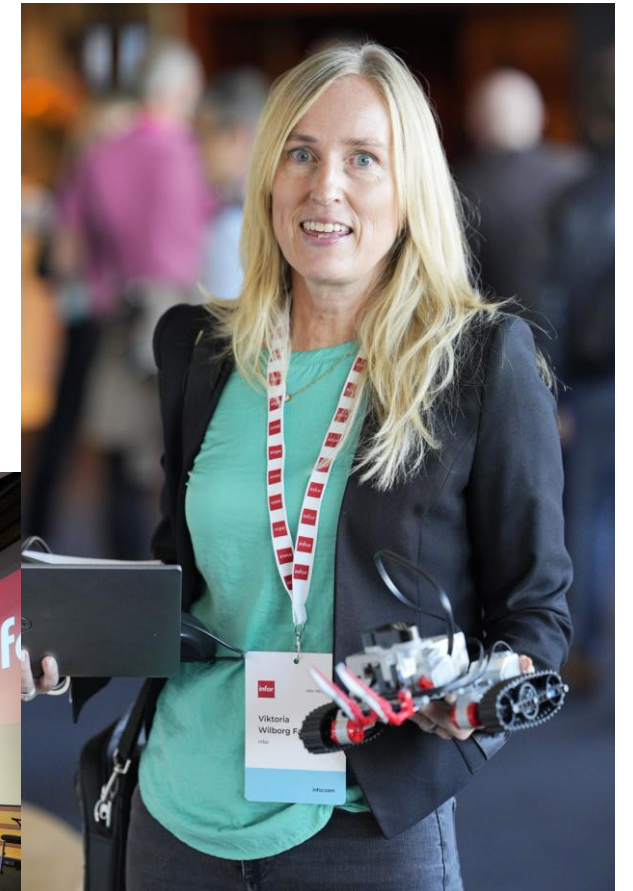
Bonusmaterial

Avslutning med frågor och information om nästa Tips&Tricks



M3 connect

# Some photos



M3 Connect

# Some stats

**First event like this since 2019**

**Replaces TechEd but will be more M3-  
focused and less general technology**

**Multiple companies sent 5 or more attendees!**

189

Attendees

96

Customers

41

Partners

2

Days for event

54

Break out sessions

3

KeyNote sessions

10+

Countries

|                   | Auditorium   | Atlas   | Hades   | Chronos   | Chaos   |
|-------------------|--|---|---|---|---|
|                   | Overview Track   | Industry Applications   | User Experience   | Technology  | Integrations and Analytics  |
| 9:00am - 09:50am  | <b>Keynote</b><br>Torbjörn Karlsson, Ole Rasmussen                                   |   |   |   |   |
|                   | Coffee break   |   |   |   |   |
| 10:10am - 11:00am | <b>Application foundation highlights</b><br>Jorgen Karlsson                          | <b>Supply chain planning</b><br>Fredrik Zachrisson  | <b>M3 UI Technology</b><br>Rickard Eklind   | <b>Infor Cloud architecture overview</b><br>Erfan Yousefi   | <b>Integration overview – news and plans</b><br>Henrik Johansson & Nichlas Karlsson |
| 11:10am - 12:00am | <b>Sales price management</b><br>Jorgen Nilsson & Anna Elfstadius                    | <b>Central procurement</b><br>Per Madsen & Sanna Norling  | <b>Output management</b> what you need to know to get the best output management solution<br>Martin Jarroff | <b>Administrative tools for M3 Business Engine</b><br>Håkan Lundh & Filip Håkansson                 | <b>M3 Analytics – Now and beyond</b><br>Pierre Nolte & Per Melander                 |
| 12:00pm - 1:00pm  | Lunch  |   |   |   |   |
| 1:00pm - 1:50pm   | <b>M3 Highlights</b><br>...  |   |   |   |   |
| 2:00pm - 2:50pm   | <b>M3 Experience designer</b><br>Gunilla Andersson & Erik Backlund                   | <b>M3 Financial Accounting</b><br>Per Jodré & Jacob Brandon   | <b>M3 Portal and M3 CLM</b><br>Thomas Herres & Johan Ahlgren  | <b>Customizing business logic using XtendM3</b><br>Erfan Yousefi, Magnus Tallqvist, Filip Håkansson | <b>Infor OS integrations and M3</b><br>Anders Karlsson & Vignesh Subramanian        |
|                   | Coffee break   |   |   |   |   |
| 3:10pm - 4:00pm   | <b>Internal Sales order &amp; PO Batch order entry</b><br>Per Madsen & Sanna Norling | <b>M3 Equipment, parts distribution, service and rental</b><br>Dan Georgsson & Anders Nilsson                     | <b>Infor OS Portal – how to run M3 in a smart way using Infor OS Portal</b><br>Gunilla Andersson            | <b>Cloud File Transfer and introducing CFT Cloud storage</b><br>Håkan Lundh & Fredrik Selleby       | <b>M3 and Data Fabric – Overview</b><br>Per Melander & Pierre Nolte                 |
| 4:10pm - 5:00pm   | <b>M3 API Best practices</b><br>Erfan Yousefi & Anders Karlsson                      | <b>M3 Service and MFS, functional highlights</b><br>Viktoria Wilborg Falkedal, Malcus Lindberg and Håkan Lindblom | <b>Oldies but goldies</b><br>Gunilla Andersson & Magnus Tallqvist   | <b>Configuration Management (ACM)</b><br>Rickard Eklind   | <b>M3 Analytics – Now and beyond</b><br>Pierre Nolte & Per Melander                 |

|                   | Auditorium  | Atlas   | Hades   | Chronos   | Chaos   |
|-------------------|---|---|---|---|---|
|                   | Overview Track  | Industry Applications   | User Experience   | Technology  | Integrations and Analytics  |
| 9:00am - 09:50am  | <b>M3 Leadership fireside chat</b>  |   |   |   |   |
|                   | Coffee break  |   |   |   |   |
| 10:10am - 11:00am | <b>Infor Cloud architecture overview</b><br>Erfan Yousefi   | <b>Supply chain planning</b><br>Fredrik Zachrisson  | <b>M3 UI Technology</b><br>Rickard Eklind   | <b>Application foundation highlights</b><br>Jörgen Karlsson   | <b>Integration overview – news and plans</b><br>Henrik Johansson & Nichlas Karlsson |
| 11:10am - 12:00am | <b>Central procurement</b><br>Per Madsen  | <b>Sales price management</b><br>Jörgen Nilsson   | <b>Output management</b> what you need to know to get the best output management solution<br>Martin Jarroff | <b>Cloud File Transfer and introducing CFT Cloud storage</b><br>Håkan Lundh & Fredrik Selleby       | <b>News in IEC – More detailed session</b><br>Nichlas Karlsson                      |
| 12:00pm - 1:00pm  | Lunch   |   |   |   |   |
| 1:00pm - 1:50pm   | <b>M3 Microservices</b><br>Fredrik Zachrisson   | <b>M3 Financial Accounting</b><br>Per Jodréen   | <b>M3 Experience designer</b><br>Gunilla Andersson & Erik Backlund  | <b>M3 Equipment, parts distribution, service and rental</b><br>Dan Georgsson                        | <b>Integration best practices</b><br>Erik Stanzé & Christian Flodin                 |
| 2:00pm - 2:50pm   | <b>Configuration Management (ACM)</b><br>Rickard Eklind   | <b>Internal Sales order &amp; PO Batch order Entry</b><br>Per Madsen  | <b>Infor OS Portal – how to run M3 in a smart way using Infor OS Portal</b><br>Gunilla Andersson            | <b>Customizing business logic using XtendM3</b><br>Erfan Yousefi, Magnus Tallqvist, Filip Håkansson | <b>Infor OS integrations and M3</b><br>Anders Karlsson & Vignesh Subramanian        |
|                   | Coffee break  |   |   |   |   |
| 3:10pm - 4:00pm   | <b>Manufacturing Execution- and Product Data Management area</b><br>Erika Tell and Stefan Frandén | <b>M3 Service and MFS, functional highlights</b><br>Viktoria Wilborg Falkedal, Malcus Lindberg and Håkan Lindblom | <b>Oldies but goldies</b><br>Gunilla Andersson & Magnus Tallqvist   | <b>Administrative tools for M3 Business Engine</b><br>Håkan Lundh & Filip Håkansson                 | <b>M3 and Data Fabric – Overview</b><br>Per Melander                                |
| 4:10pm - 5:00pm   |   | <b>Best practices Warehouse Management</b><br>Henrik Göransson  | <b>M3 Experience Designer – Build you own application, for beginners</b><br>Disa Gillner & Erik Backlund    | <b>M3 API Best practices</b><br>Erfan Yousefi & Anders Karlsson                                     | <b>Integration best practices</b><br>Erik Stanzé & Christian Flodin                 |

M3 Connect

# Beyond applications

## Dilemma for CIOs

### Key challenges

Complexity and cost with multiple vendors

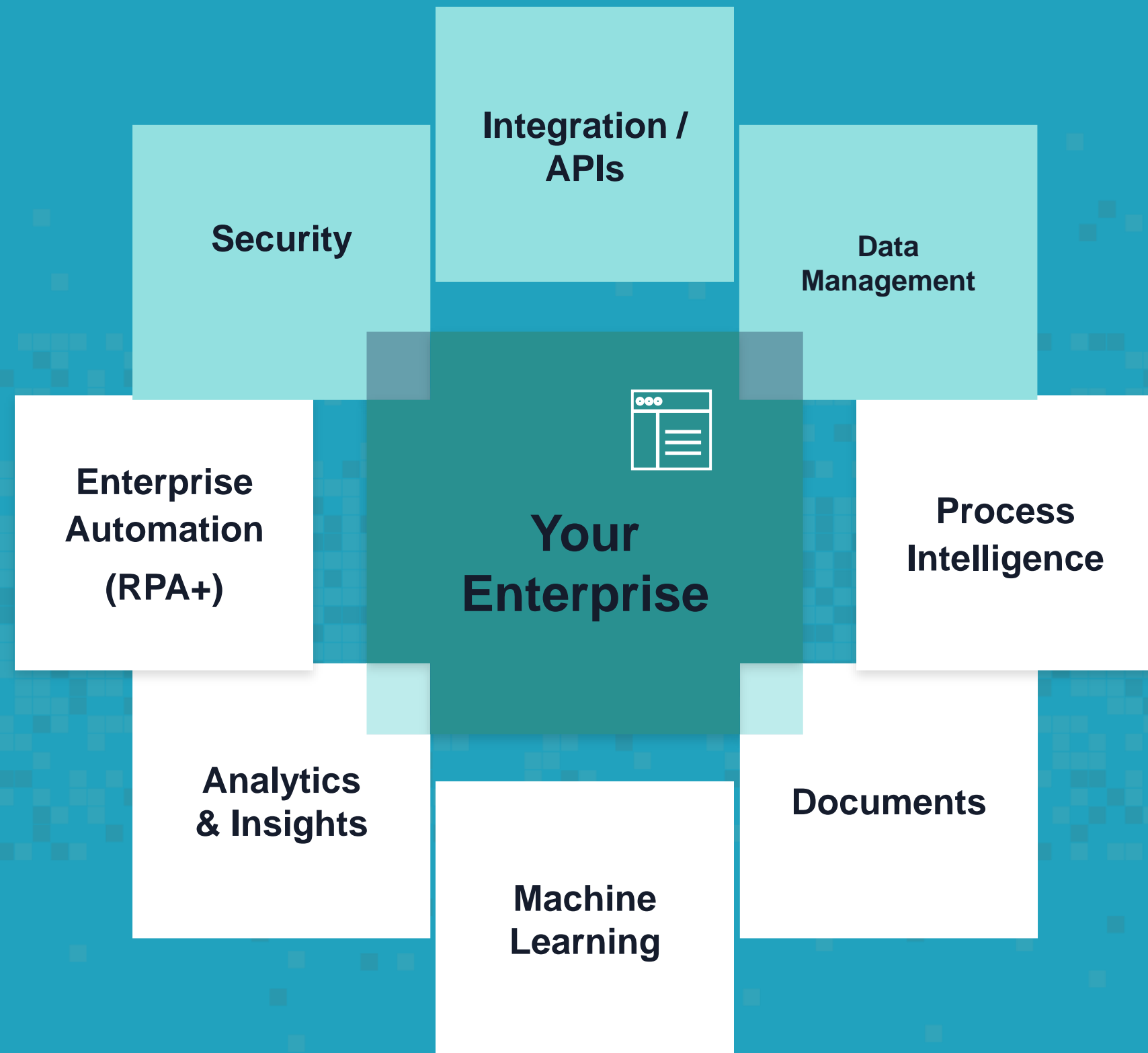
Need to maintain different skillsets

“Forever” integration & maintenance work

Dealing with multiple clouds

Security challenges

Fragmented user experience



Organizations are often forced to "stitch together" multiple applications, resulting in a fragmented and fragile enterprise architecture

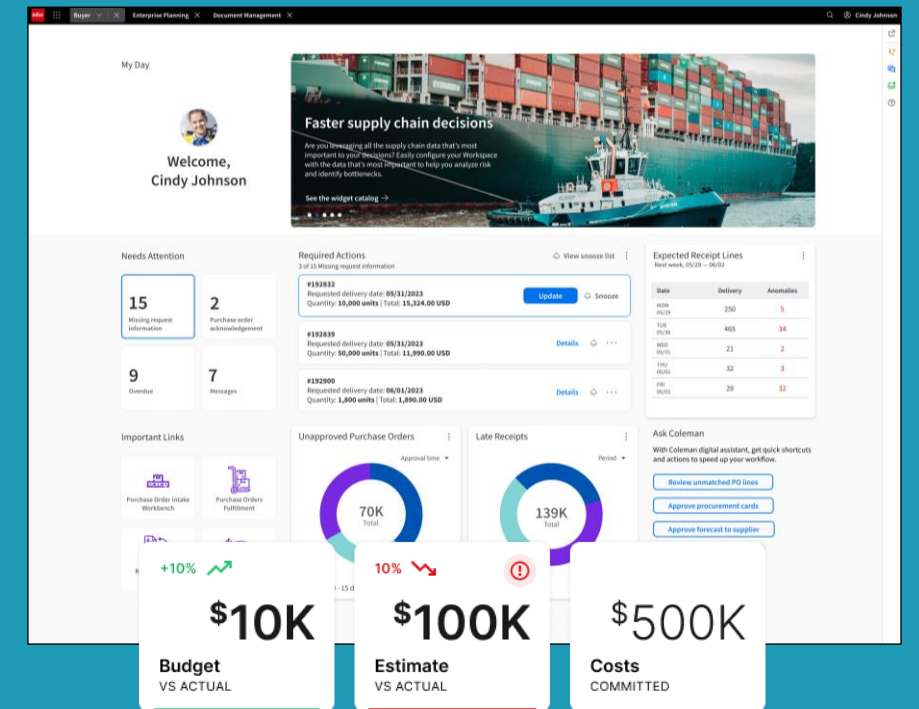
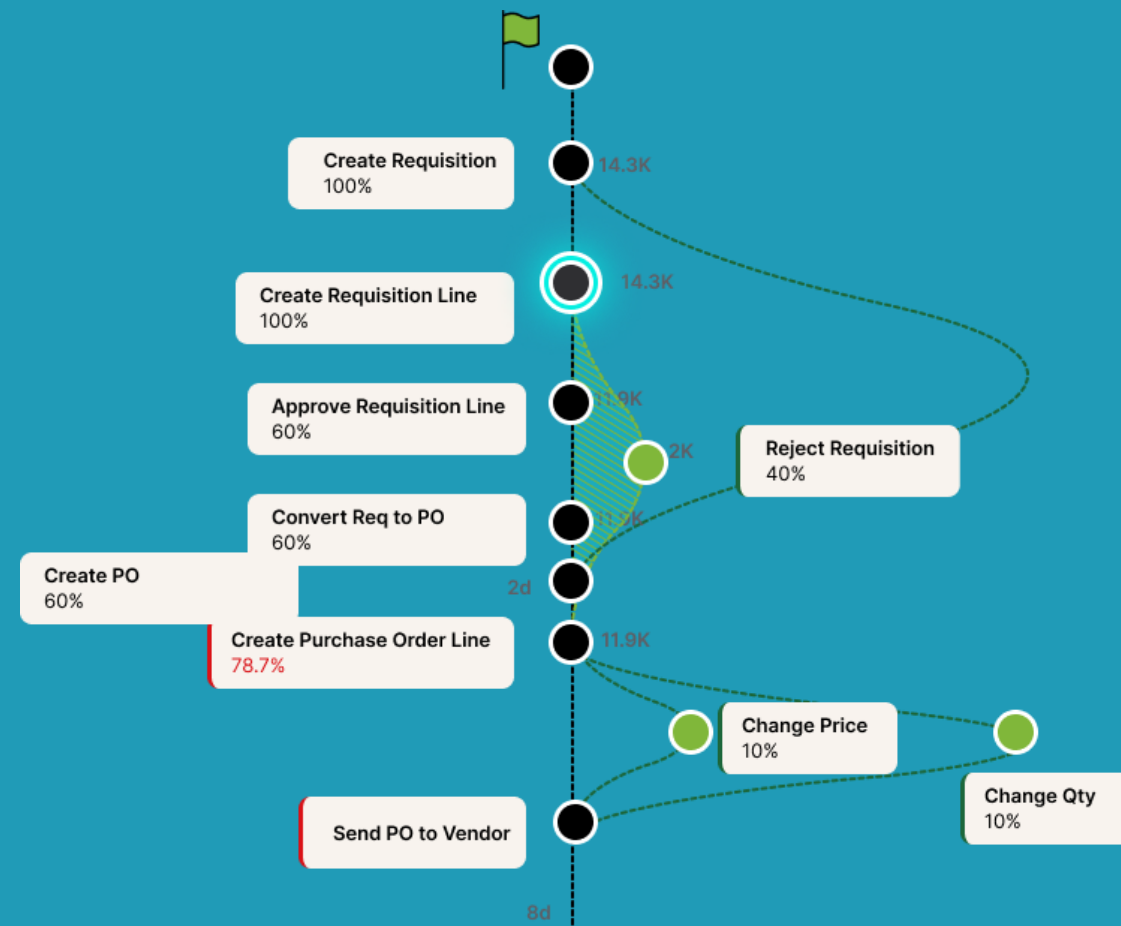
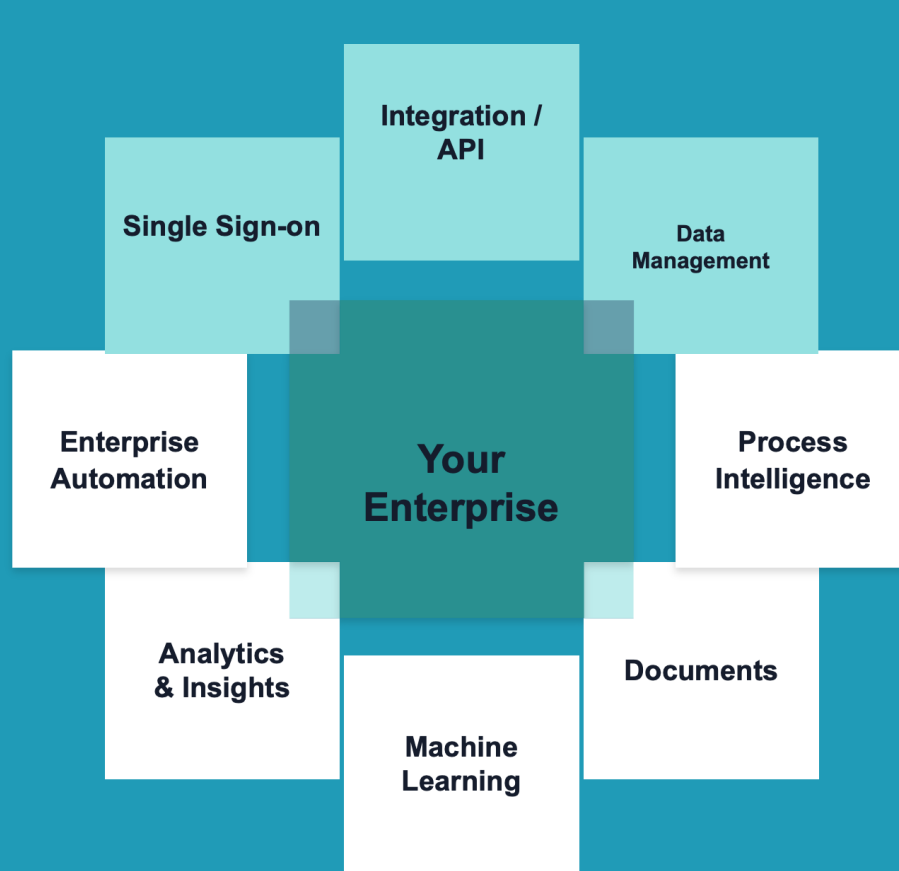


# Infor solution

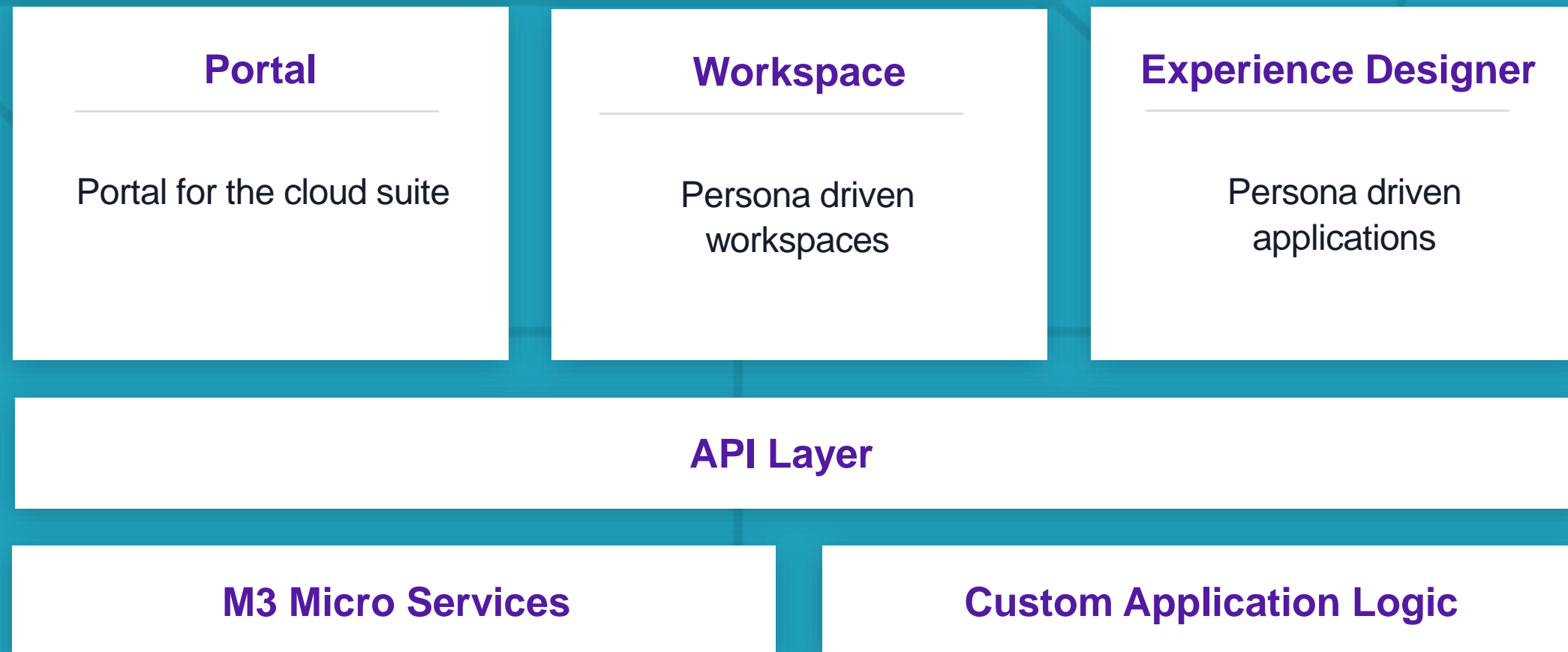
One Integrated Platform

Composable Processes

Automation / Intelligence / Productive



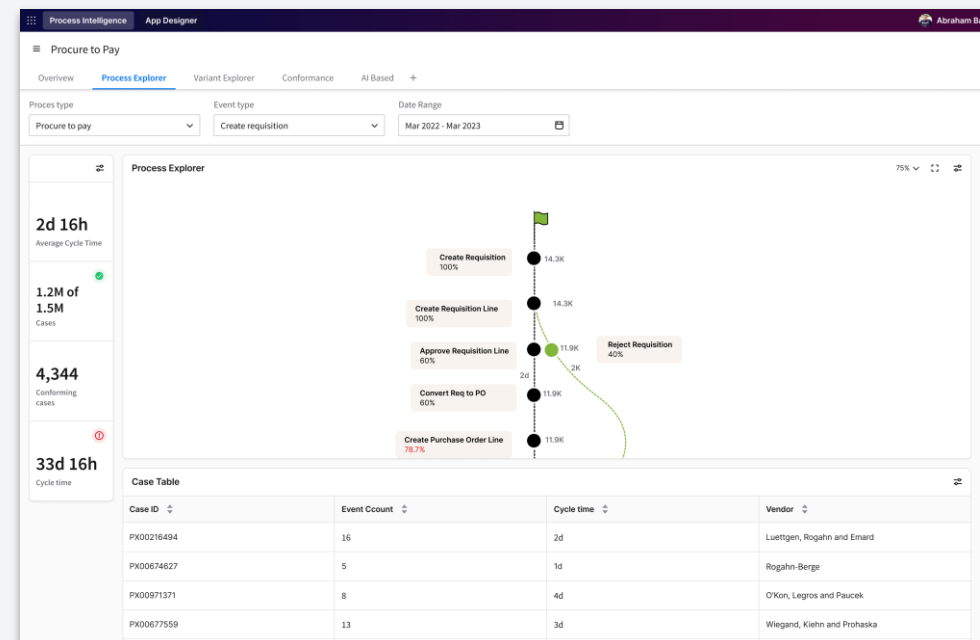
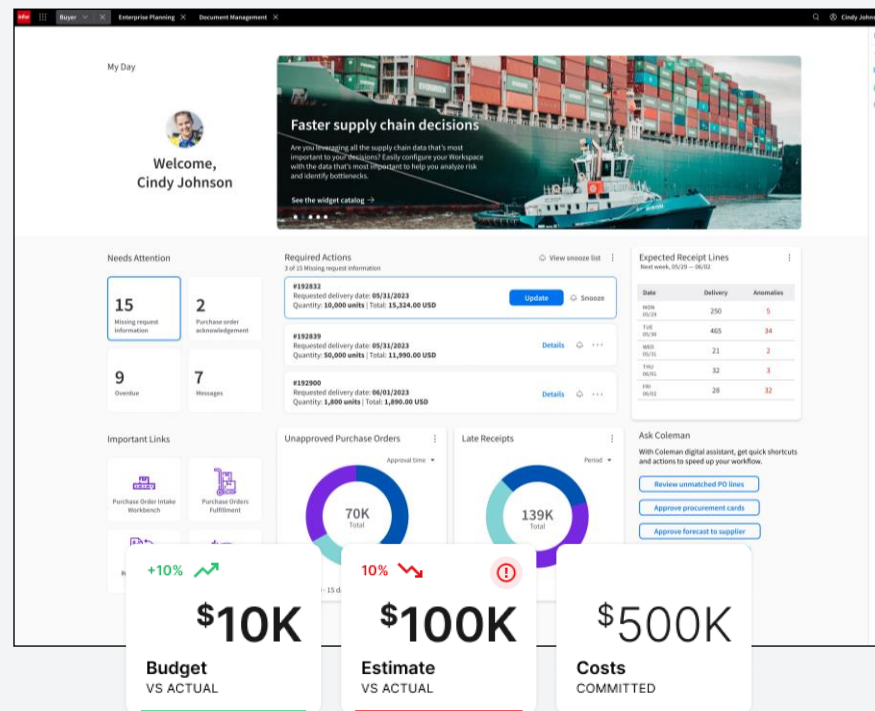
# UX Direction



# Infor OS Portal

## Persona driven workspaces

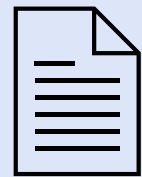
## A portal solution that offers a coherent user experience for Infor Applications



- Application navigator
- Tabs of open apps
- Insights with Workspaces
- Pop-out Smart Panel
- Easy to use, secure, efficient, extensible, and productive

# Everybody talks about sustainability

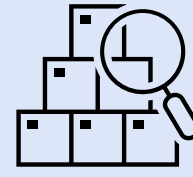
## Four main product development initiatives



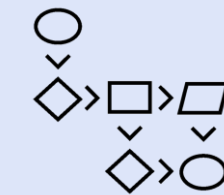
**Sustainability improvement & reporting**



**Sustainability taxes**



**Product sustainability declaration**



**Business process changes**

# Sustainability 360

## Our take on it

### Reporting

Follow up, drill down, connect to cloud suite and other sources

### Plan and act

Set up and break down strategy and goals  
Follow up with actions

**infor**

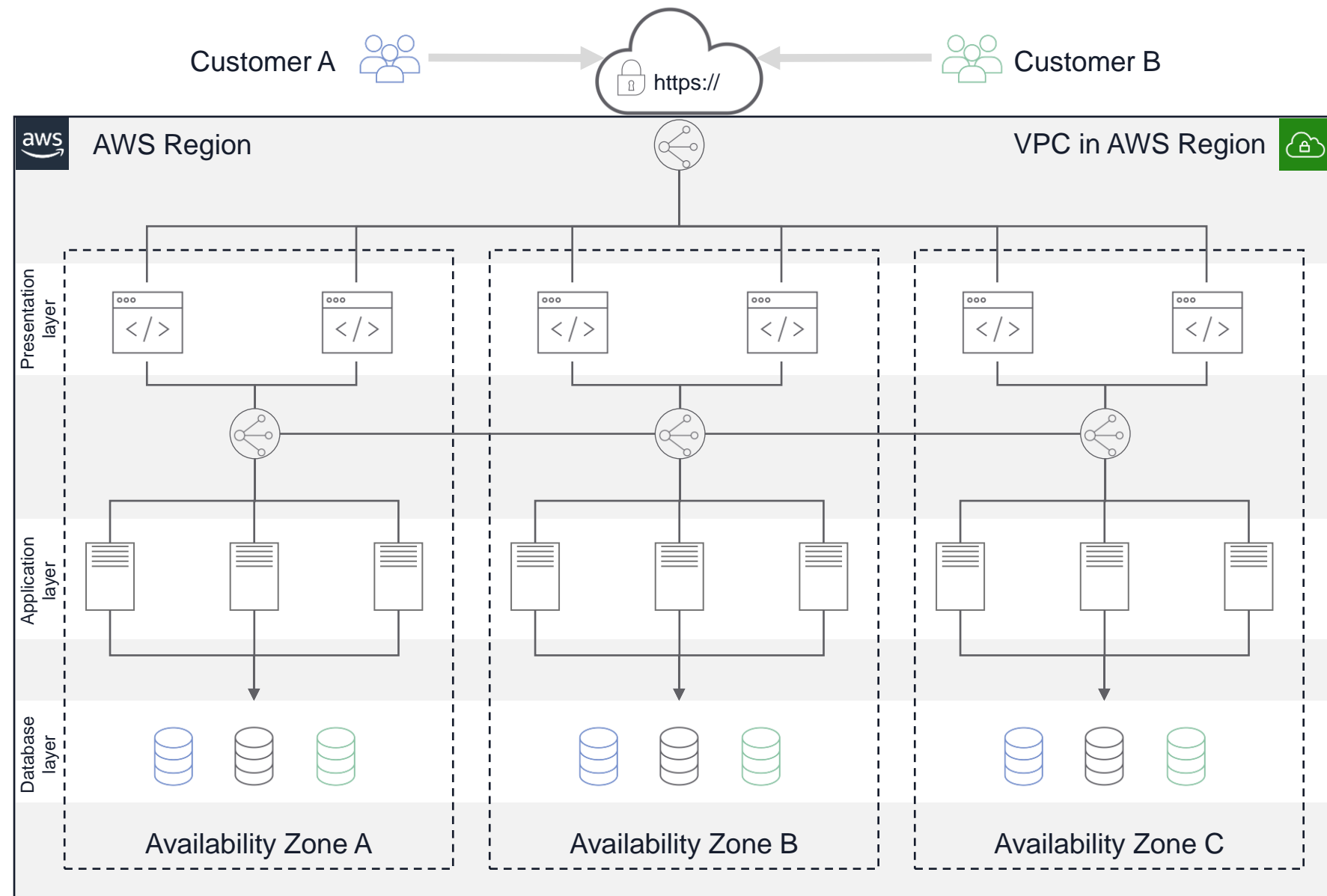
Infor M3 Connect

# 54 sessions in a few minutes

Or “Mission impossible 8 – Information overload”



# CloudSuite architecture – High availability



(Note: simplified configuration for illustrative purposes only)

Minimum of 3 AWS Availability Zones in use

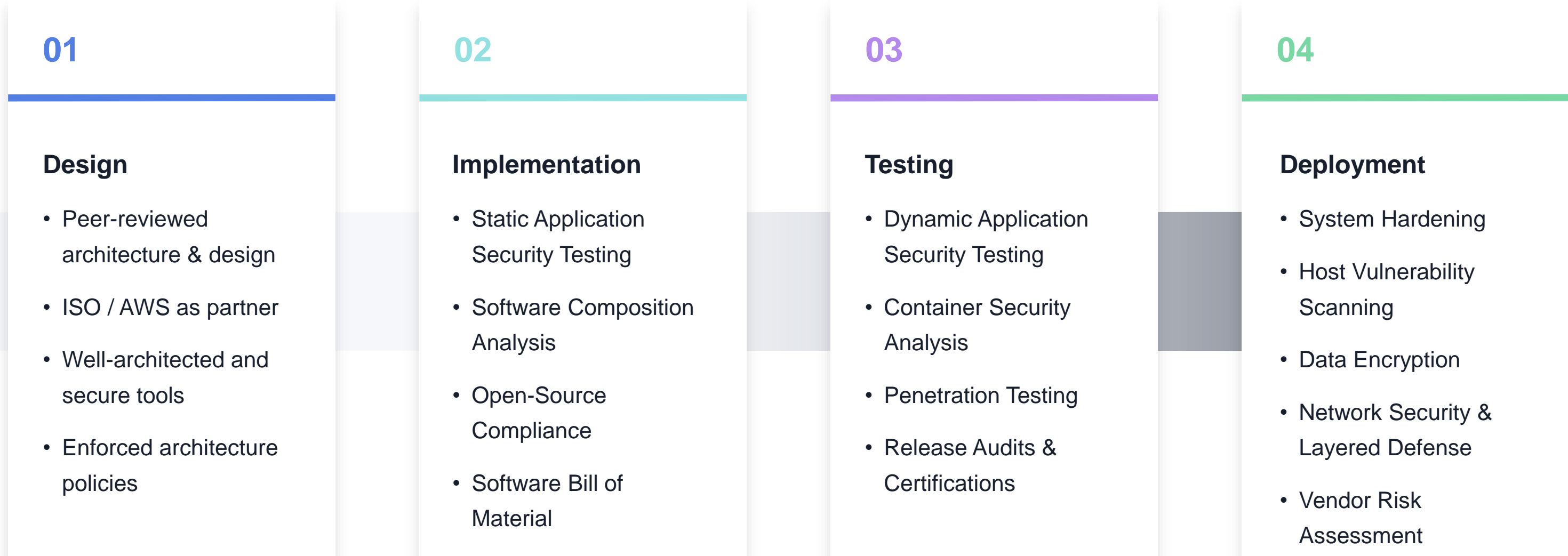
Multiple Auto-Scaling Groups for each workload type

- Auto-scaling replaces failed servers + can add capacity

Database servers in multiple clusters

- Use real time replication (SQL Server Always On Availability Groups)
- Automated fail-over

# Secure Development & Operation



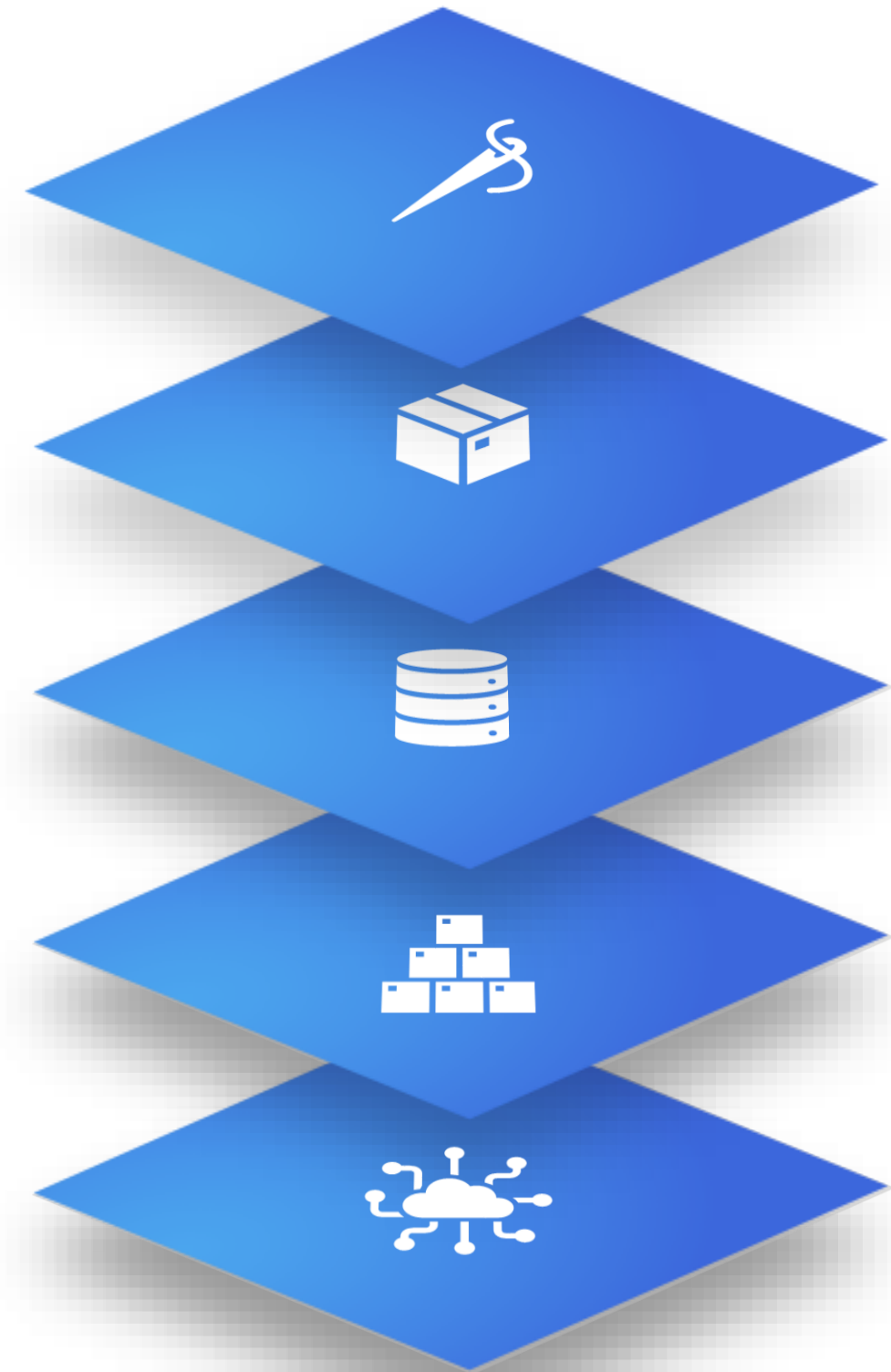
**aws** Physical Security

- Biometric-protected
- Physical intrusion monitoring, detection, and alerting



# Innovation Continues

- ✓ **Modern Extensibility Layer**
  - Upgraded customization platform
- ✓ **Modern Runtime Layer**
  - Upgraded runtime
- ✓ **Modern Storage Layer**
  - Upgraded storage
- ✓ **Modern Infrastructure Layer**
  - Upgraded infrastructure
- ✓ **Modern Automation Layer**
  - Upgraded automation



M3 Microservices

# Microservice advantages

What is in it for us?



## Independence

- Loosely coupled services
- Each team owns its own service
- More frequent and smaller updates



## Performance & Scaling

- Cloud Native
- Optimization of database access
- Each service built for purpose
- Deploy more instances - Infinite scaling



## Don't re-invent the wheel

- Well known technologies
- Use OpenSource, do not write your own solutions
- Leverages huge investments in Cloud made by AWS
- Smarter solution from experience

# What is an M3 Microservice

A standalone **web application/service**, loosely coupled and independently deployed as container

M3 Microservices run **on a new runtime platform**, with separate infrastructure and delivery pipeline – parallel solution with completely different tech stack

Each microservice **provides and owns a business functionality**, other services will use it for interacting with that function or its data

Called through **REST endpoints** or listening to asynchronous events

# M3 Business Engine Administration Tools

- The Administration Tools can be accessed via the Infor M3 menu in Infor Portal
- The Administration Tools has a submenu and the entries shown in the submenu are controlled by IFS roles
- Information on BE Admin Tools can be found in "M3 CE Core Administration Guide" [docs.infor.com](https://docs.infor.com)

## Required Security roles for M3 CE Core

If any of the required Security roles are missing, you must add these roles manually through the User Management menu in Infor Ming.le™ or Security menu in Infor OS Portal. To add new roles, you must be connected to the UserAdmin role.

See information about adding a security role in the *Infor Ming.le Online Help* or *Infor OS Portal User Guide*.

## Required Security roles

This table shows the list of Security roles that are required to accomplish administration tasks for each M3 application type:

| Application type   | Security role      | Description  |
|--------------------|--------------------|--|
| Grid               | GRID-Administrator | Users with this role can download the CFT Client installation.   |
| M3 Business Engine | M3BE-FndAdmin      | Users with this role can list, stop, configure logging and log levels, and configure profiling for all M3 BE jobs on the M3 Business Engine Jobs page, as well as download logs for any M3 BE user on the Business Engine Logs page. |
| M3 Business Engine | M3BE-FndUser       | Users with this role can list and stop their own M3 BE jobs on the Business Engine Jobs page, as well as download their own dump logs on the Business Engine Logs page.  |
| M3 Business Engine | M3BE-LogEnabler    | Users with this role can configure logging, log levels, and profiling for their own M3 BE jobs on the M3 Business Engine Jobs page.  |



# M3 Metadata Publisher

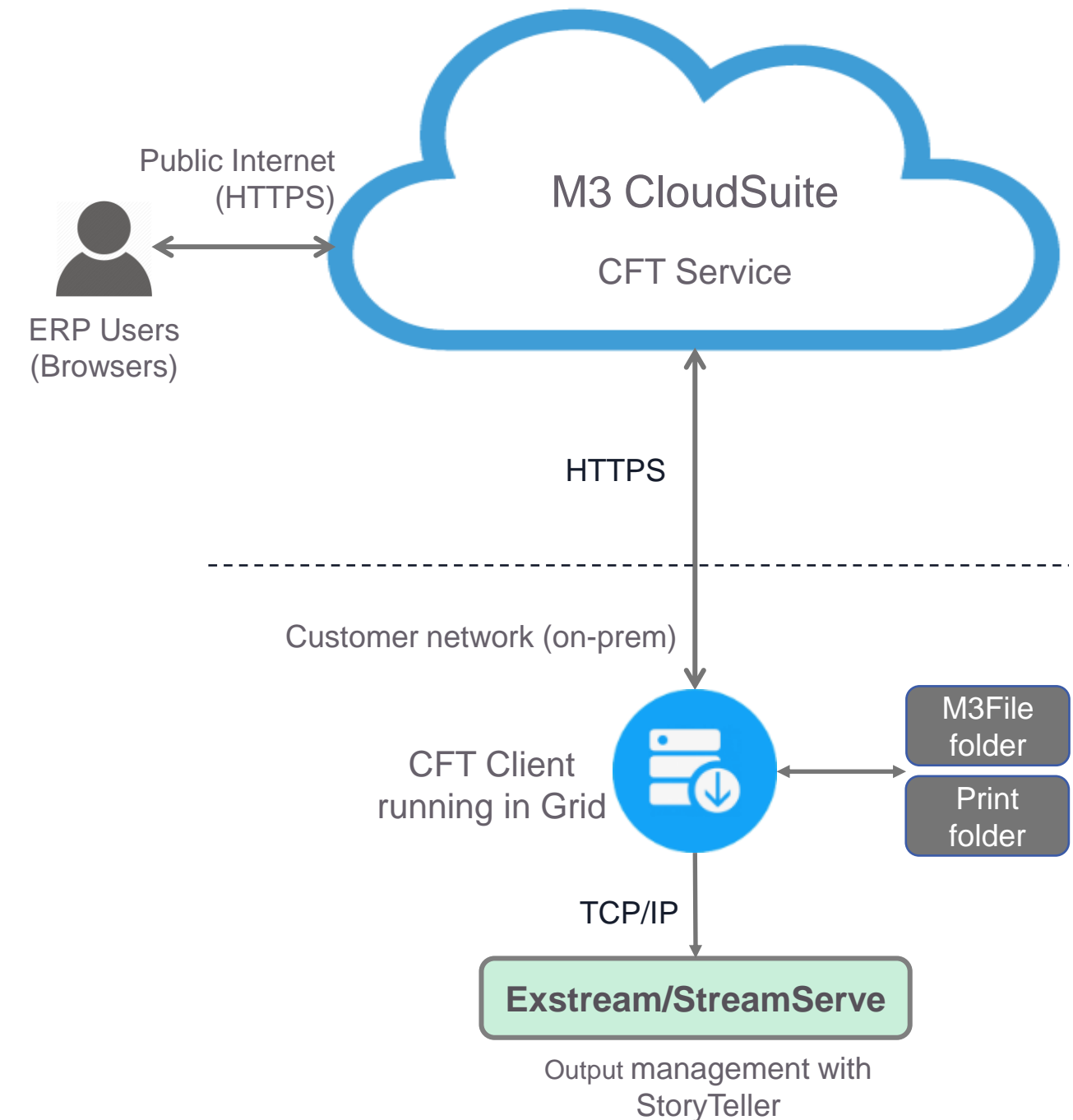
- Via MDP it is possible to explore M3 tables, fields, programs, API;s and relations
- MDP can also display M3 source code
- In MDP APIs can be explored and tested as an alternative to Swagger tool in ION Gateway
- API Test is connected to IFS security.

The screenshot displays the M3 Metadata Publisher web application. The interface includes a navigation bar with a hamburger menu, a search bar, and dropdown menus for 'M3 API Repository', 'M3 Function', and 'Settings'. The main content area is titled 'Search By System Configuration' and shows search results for the keyword 'CRS08' in the 'M3BE\_16.0\_ALL' system. The search results are displayed in a table with columns for Program Name, Description, Component, Category, Bookmark, Bookmark Pa..., and Source Code. The results list several programs, including CRS080, CRS080MI, CRS081, and multiple instances of CRS082, each with a corresponding source code icon.

| Program Name             | Description              | Component | Category | Bookmark | Bookmark Pa... | Source Code |
|--------------------------|--------------------------|-----------|----------|----------|----------------|-------------|
| <a href="#">CRS080</a>   | Wrk: Department          | MVX       | Wrk      | No       | Yes            |             |
| <a href="#">CRS080MI</a> | Api: Department          | MVX       | Api      | No       | Yes            |             |
| <a href="#">CRS081</a>   | Wrk: Customs Office      | MVX       | Wrk      | No       | Yes            |             |
| <a href="#">CRS082</a>   | Work with CONTROL METHOD | MCH       |          | No       | Yes            |             |
| <a href="#">CRS082</a>   | Wrk: Control Method      | MCZ       | Wrk      | No       | Yes            |             |
| <a href="#">CRS082</a>   | Wrk: Control Method      | MDK       | Wrk      | No       | Yes            |             |
| <a href="#">CRS082</a>   | Wrk: Control Method      | MFI       | Wrk      | No       | Yes            |             |
| <a href="#">CRS082</a>   | Wrk: Control Method      | MPT       | Wrk      | No       | Yes            |             |
| <a href="#">CRS082</a>   | Wrk: Control Method      | MVX       | Wrk      | No       | Yes            |             |

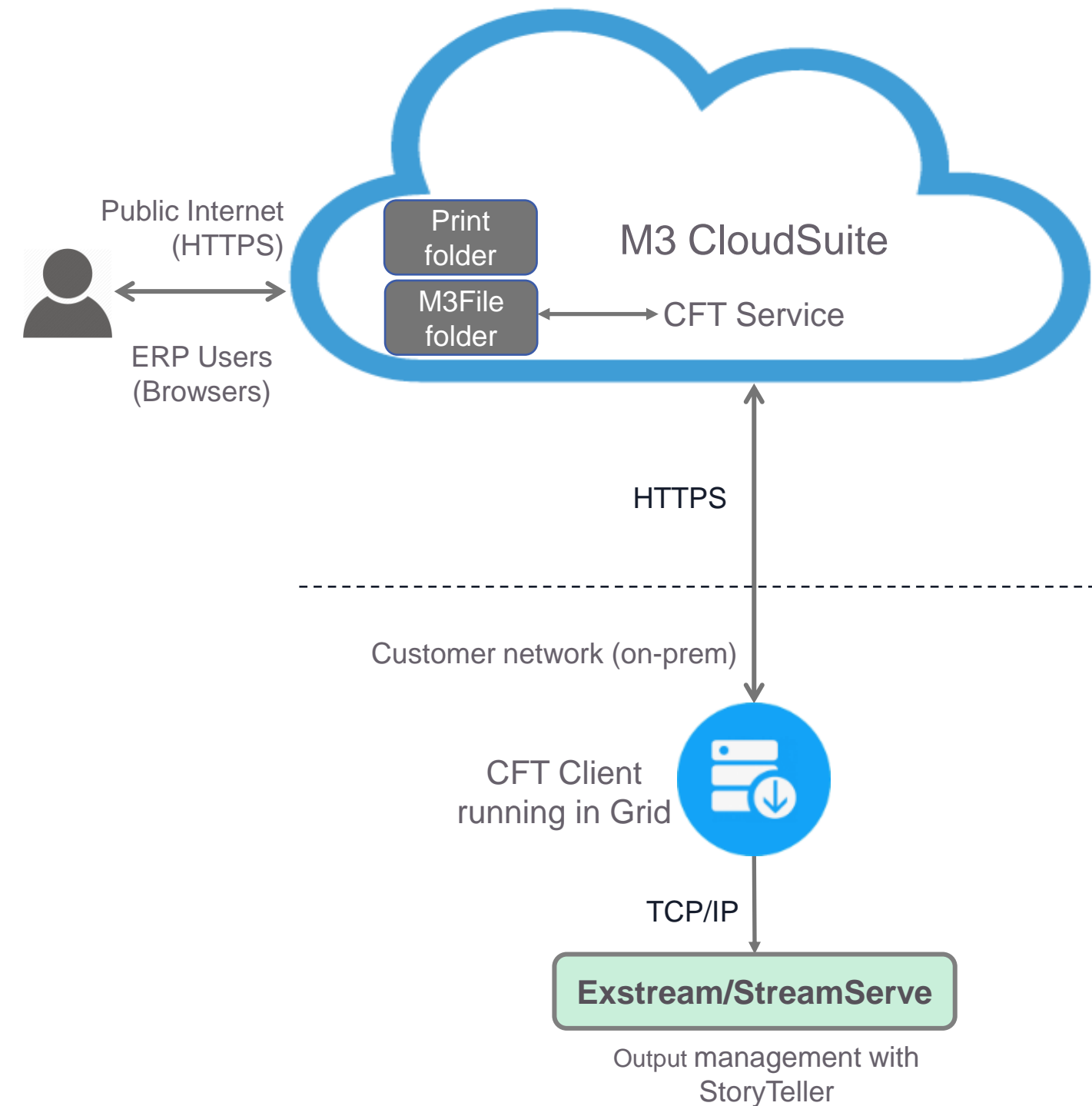
# Cloud File Transfer

- CFT is a server-client application
  - CFT Service (Cloud) – CFT Client (on-premises hosted by customer)
  - CFT Client run in Grid (Infor Application server)
    - Requires SQL Server Database
  - Download of CFT Client done from CFT Admin page
    - Installation package with Grid and certificate used for cloud communication
    - Documentation
      - M3 Cloud Configuration Guide [link](#)
      - M3 Core User and Administration Guide [link](#)



# CFT with Cloud Storage

- M3 files stored in cloud
  - MVX File Transfer
  - Data Management (Export/Import)
  - Configuration Data
  - FAT Exports
- Move of print files to CFT Client
  - CFT Client send prints to Exstream/StreamServe
    - Configuration for print server and port is set in M3 BE
- Saved printouts stored in cloud
  - marked with option “save” in M3 BE



# Data Management enhancement for XtendM3 tables

- Data Management for XtendM3 Dynamic Tables (EXT component), has been aligned with standard functionality (MVX and Mxx components)
- Enhancement includes:
  - Export/import tables based on Company and Division
  - Clear target table at import
  - Delete company
- Note, there are three differences to be aware of
  - Export based on date is not an option for XtendM3 Dynamic Tables
  - It will still be possible to export/import XtendM3 tables without CONO field as to not introduce breaking changes
    - Therefor, it will be possible to select "All" as opposed to "All Companies" in the case of MVX component
  - Import from database is not available for the EXT component



# Introduction

## Tooling

Configuration Management is that allow configurations to be copied from one tenant to another (like from TST to TRN). This functionality is cross CloudSuite i.e., M3, Infor OS, ...

The information exported from one tenant is referred to as a local package.

A local package cannot be downloaded, it is stored in cloud for a limited time.

## Value

- Structured handling of configurations
- Avoid errors from manual processes
- Lower cost of managing environments

General Availability is October 25, 2023

# Types of resources that can be moved

## M3 Business Engine

- Sorting option, Sorting order, Delivery methods, Rental reasons, Item type, Role, and more

## M3 Tech

- Xtend M3, M3 UI artifacts, Experience Designer, GLT, M3 Portals, Sales Hub, Event Analytics, BOD Processor, Enterprise Collaborator, DLP, and more

## Infor OS

- API Gateway, Coleman, Digital Assistant, Document Management, Infor OS Portal, ION, and more

# Cloud Suite Self Service Portal

## Configuration Management tooling

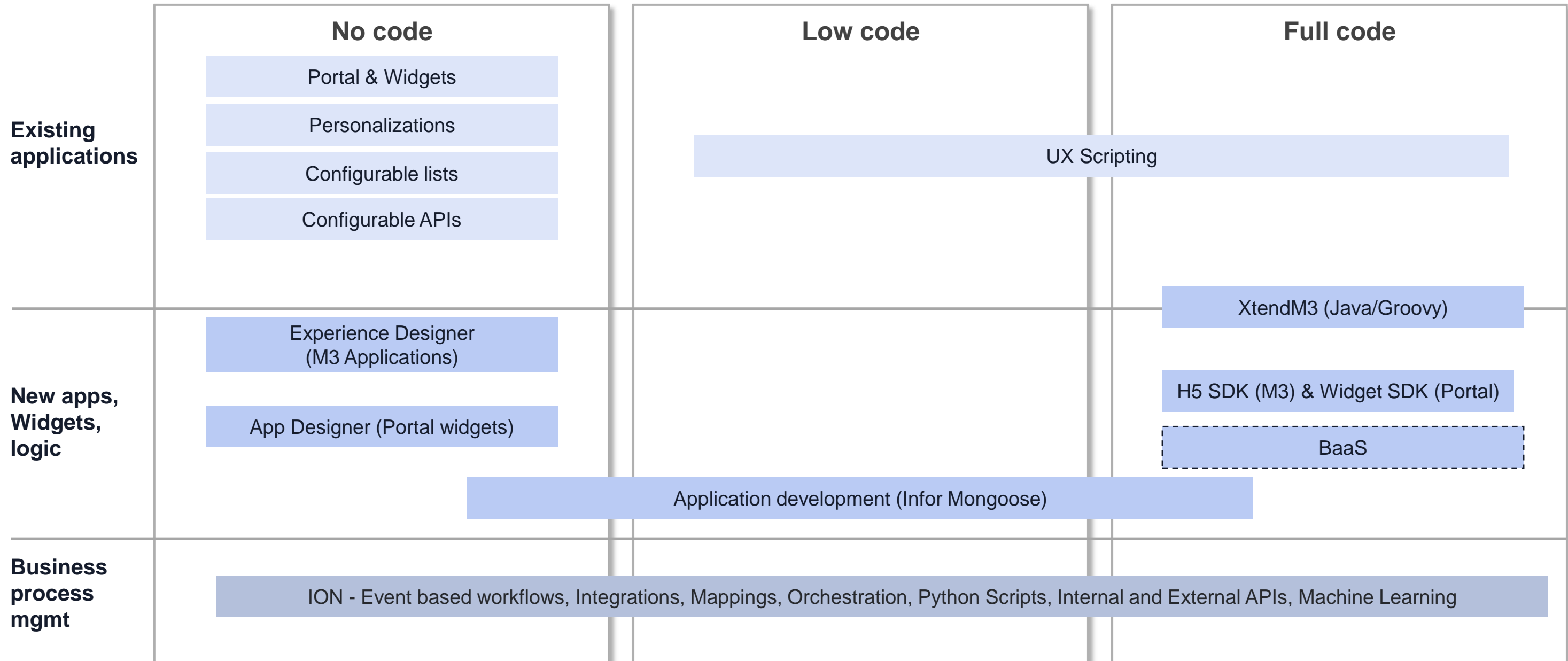
The main user interface is in Cloud Suite Self Service Portal (CSSP), also called Self Service Portal (SSP), in the Configuration Management menu.

### Tasks performed in SSP

- Create a Local Package
- Deploy a Local Package
- Maintain Tags

| Name   | Tenant ID                | Status                   | Su |
|--|--------------------------|--------------------------|----|
| [R] <input type="text"/>                         | [R] <input type="text"/> | [R] <input type="text"/> |    |
| _export_target_ACM Test 51_4b28e64f-6069-4a88-9t | M3CEDEVAPPUP_DEV         | SUCCESS                  | Sy |
| ACM Test 51                                      | M3CEDEVAPPUP_DEV         | SUCCESS                  | Ri |
| MUAMUPS20230414-0925                             | M3CEDEVAPPUP_DEV         | SUCCESS                  | Rc |
| MUAMUPS20230413-0721                             | M3CEDEVAPPUP_DEV         | SUCCESS                  | Rc |
| MUAMUPS20230411-0853                             | M3CEDEVAPPUP_DEV         | SUCCESS                  | Rc |
| MUAMUPS20230411-0843                             | M3CEDEVAPPUP_DEV         | SUCCESS                  | Rc |
| MUAMUPS20230411-0808                             | M3CEDEVAPPUP_DEV         | SUCCESS                  | Rc |
| MUAMUPS20230411-0753                             | M3CEDEVAPPUP_DEV         | SUCCESS                  | Rc |

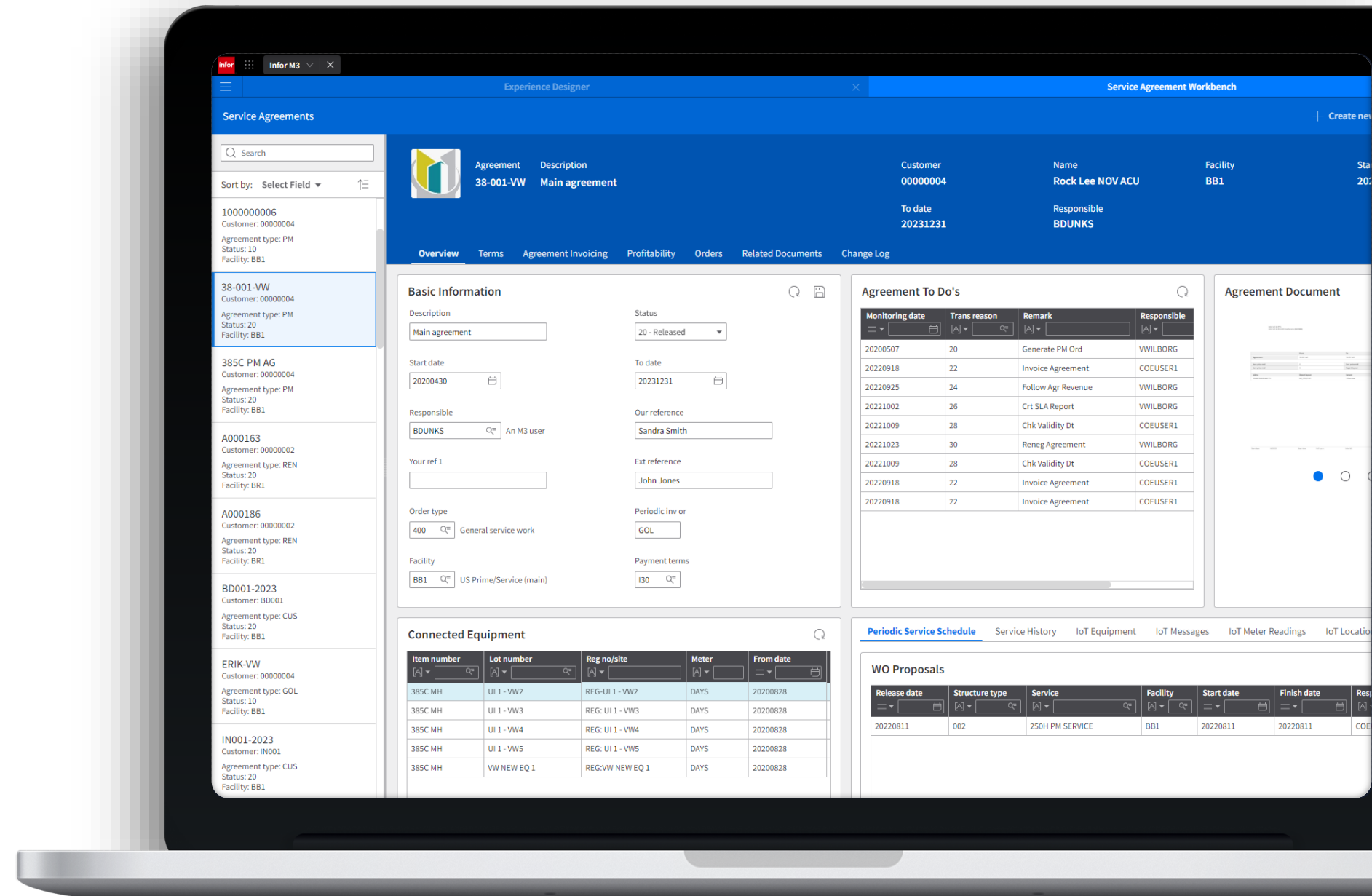
# Where does it fit in?



What is M3 Experience Designer?

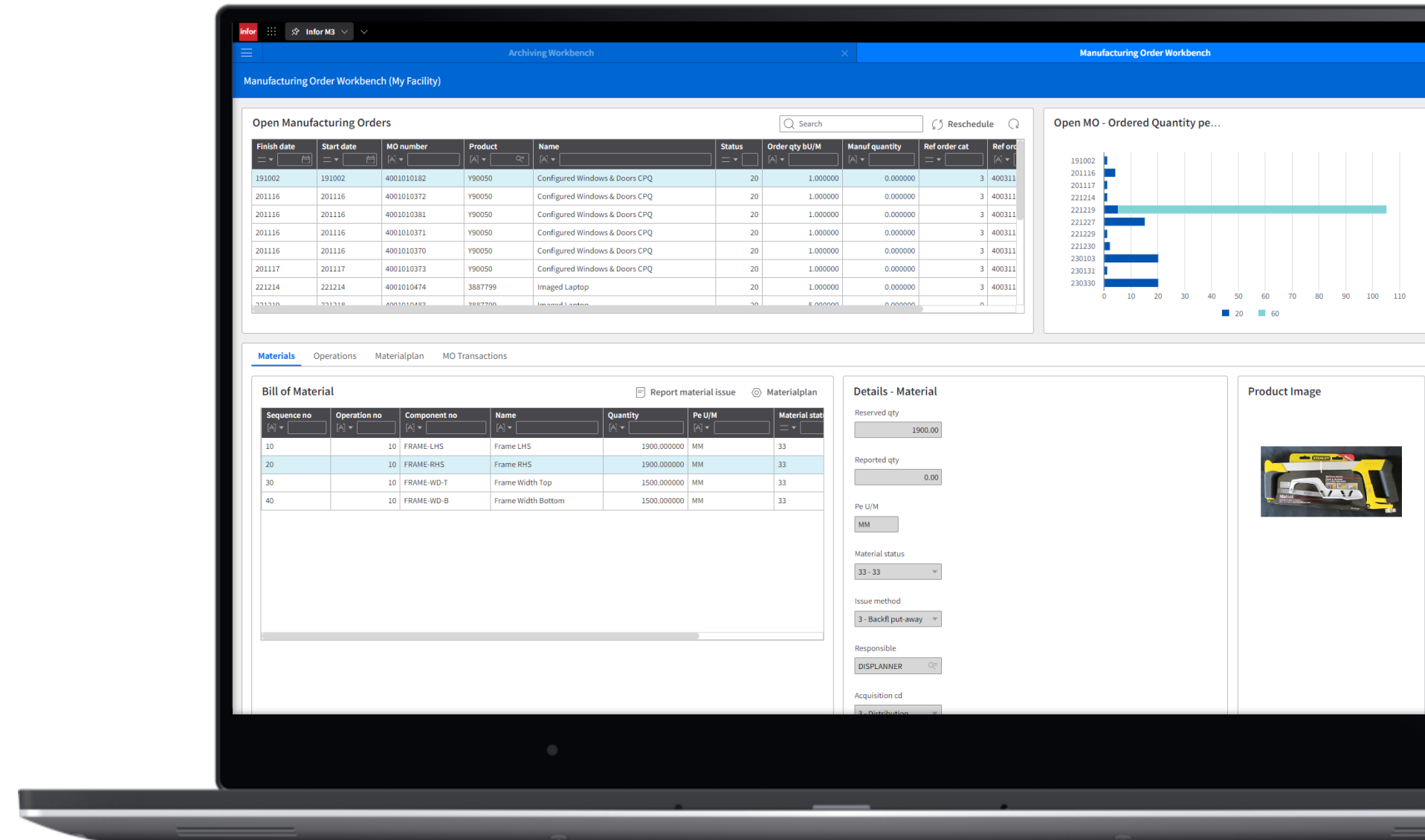
# Product Highlights

- No code solution - Easy to learn, easy to use.
- UI components library
- Flexible interaction patterns
- Responsive layout
- Standardized interaction with API's
- Standard applications from M3 Development
- Templates, available at Marketplace in October



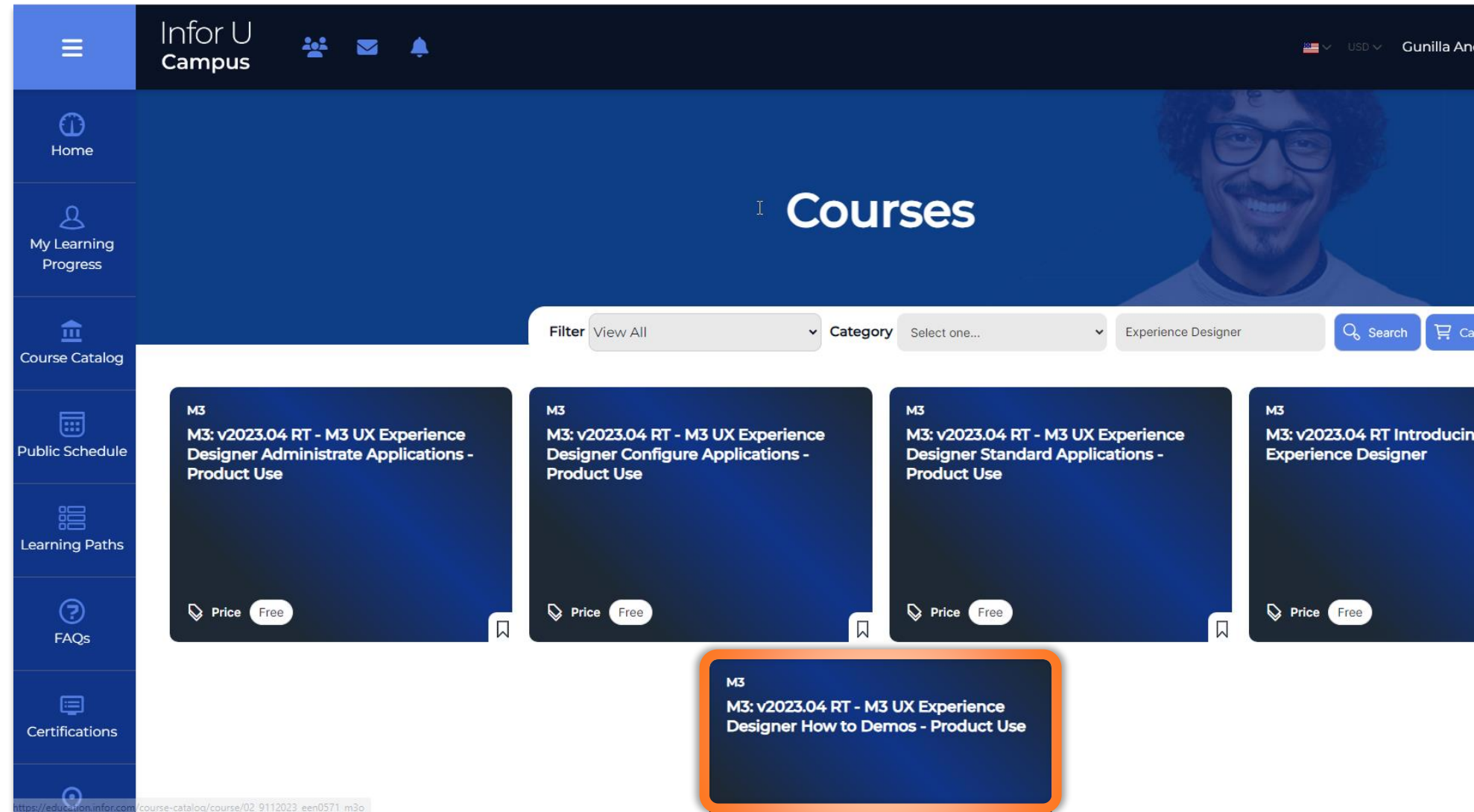
# Prerequisites

New H5 is needed, both for running applications, and for using the designer.



# How do I learn how to use Experience Designer?

- Education videos on Infor U
- User and administration guides on docs.infor.com ([M3 Core](#))
- KB 2295809
- Other areas you need to know:
  - API:s (Meta Data Publisher)
  - M3 Functional Search
  - CMS010/005



# What's next?

- Conditional styling
- Auto select first row
- Upload documents to IDM
- Button/Link component
- Group pane component
- Open app with default values

The screenshot displays the 'Connect Item Overview' for 'Lemon Doughnut' (Item ID: 120000105). The interface includes a search bar with 'doughnut', a list of items on the left, and three main data sections: Inventory per Warehouse, Stock Balance per Warehouse, and Materialplan.

**Item Information:**

- Item: Lemon Doughnut (120000105)
- Net weight: 10,000000
- Gross weight: 1234,000000
- Status: 20 - Released

**Inventory per Warehouse:**

| Warehouse | Description                    | On-hand approve | Allocated qty | Safety stock | No. bal IDs | Acquisition cd    | Lead time | Responsible | Buyer      | Last rcpt date | Last issue date |
|-----------|--------------------------------|-----------------|---------------|--------------|-------------|-------------------|-----------|-------------|------------|----------------|-----------------|
| 231       | James Hall Preston DC          | 49997           | 0             | 201          | 3           | 1 - Manufacturing | 0         | GHORMACHUE  | ORASMUSSEN | 200429         | 230412          |
| 291       | PLF LE PONTET. 11/291 - France | 90              | 0             | 200          | 2           | 2 - Purchase      | 17        | MICPHIO     | MICPHIO    | 210105         | 210106          |
| 301       | PLF CESTAS - FR2/F21           | 200             | 0             | 50           | 1           | 3 - Distribution  | 11        | MICPHIO     | MICPHIO    | 210106         |                 |

**Stock Balance per Warehouse:**

| Location | Lot number | On-hand approve | Allocated qty | Basic U/M | Status bal ID  |
|----------|------------|-----------------|---------------|-----------|----------------|
| TF0101   | 2004100186 | 49997           | 0             | CRT       | 2 - Approved   |
| YQ9901   | 2004100186 | 1               | 0             | CRT       | 3 - Rejected ⚠ |
| YQ9901   | 2004100186 | 1               | 0             | CRT       | 3 - Rejected ⚠ |

**Materialplan:**

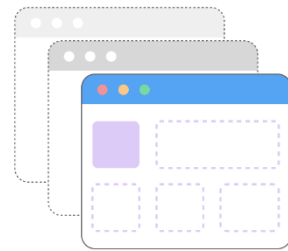
| Planning date | Alt plan date | Trans qty bU/M | Projected ohb | Order category       | Action message | Ref text    |
|---------------|---------------|----------------|---------------|----------------------|----------------|-------------|
| 230306        |               | -10            | 49987         | 311 - Customer order |                | DDF 26-1220 |
| 230411        |               | -3             | 49984         | 311 - Customer order |                | Y906 GA_003 |



# New user Portal

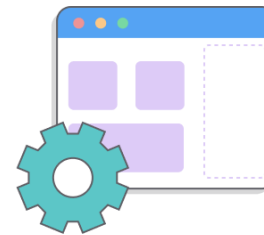
This dynamic industry, and role, specific gateway is the ideal place for users to begin and end their day

The new Portal includes:



## Workspaces

Complete tasks and get critical information with ease. Users can configure their Workspace or create a new one to personalise how they work



## Smart Panel

Quick access to Inbox, Coleman Digital Assistant, and Smart Help without leaving the screen



## Navigation Menu

Access Workspaces, bookmarks, and applications—all in one place

# Enabling hyper-productivity for the end user

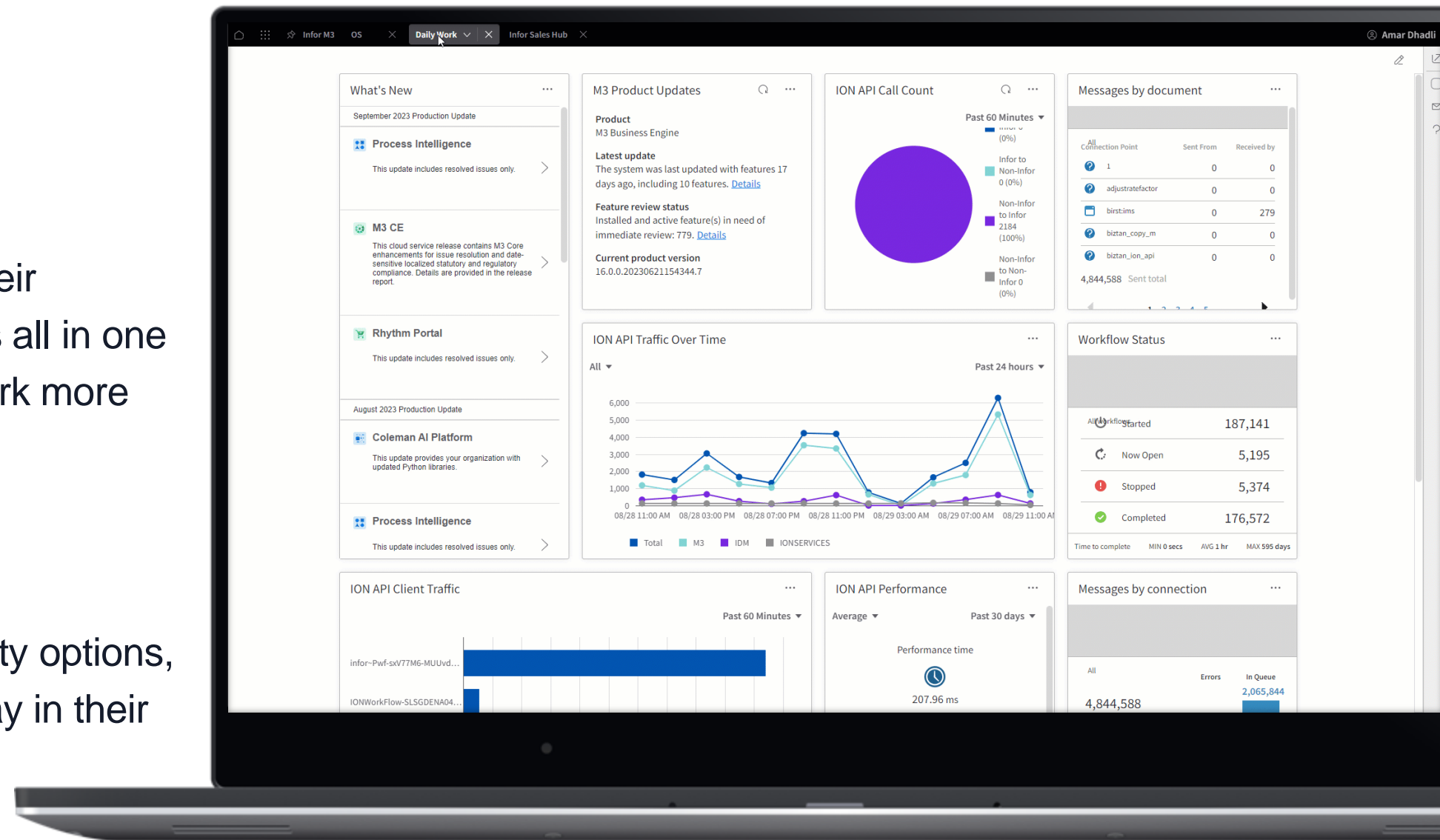


## Improved CloudSuite navigation

- Users can now access, manage, and personalise their applications, bookmarked screens, and Workspaces all in one place. So, they can multitask, and complete their work more easily using OS Portal

## Configurable Workspaces

- Users can leverage robust Workspaces configurability options, so they have the ideal place to start and end their day in their Infor CloudSuite



# Using Infor OS Portal

Infor OS Portal introduced and available for all customers in April 2023

- All new Infor Cloud deployments are Infor OS Portal only
- Existing Cloud customers (deployed prior to April 2023) can try it out and will have to switch over by April 2024
  - Ming.le interface will be retired in April 2024 (H5 Classic will also retire at the same time)
  - Note!! New H5 is a Prerequisite

## CloudSuite Tenants are now in Trial mode

- You can migrate the content and configuration from Infor Ming.le and Homepages to Infor OS Portal
- You can migrate your data multiple times while your [TST/DEV] tenant is in the trial mode
- Data migration is not available when your tenant is in the finalised mode
  - Once set to “finalised” only OS Portal can be used – Ming.le no longer accessible
- This must be done by April 2024

## Infor OS Portal

# Increased limits for Tabs and Workspaces

## Description

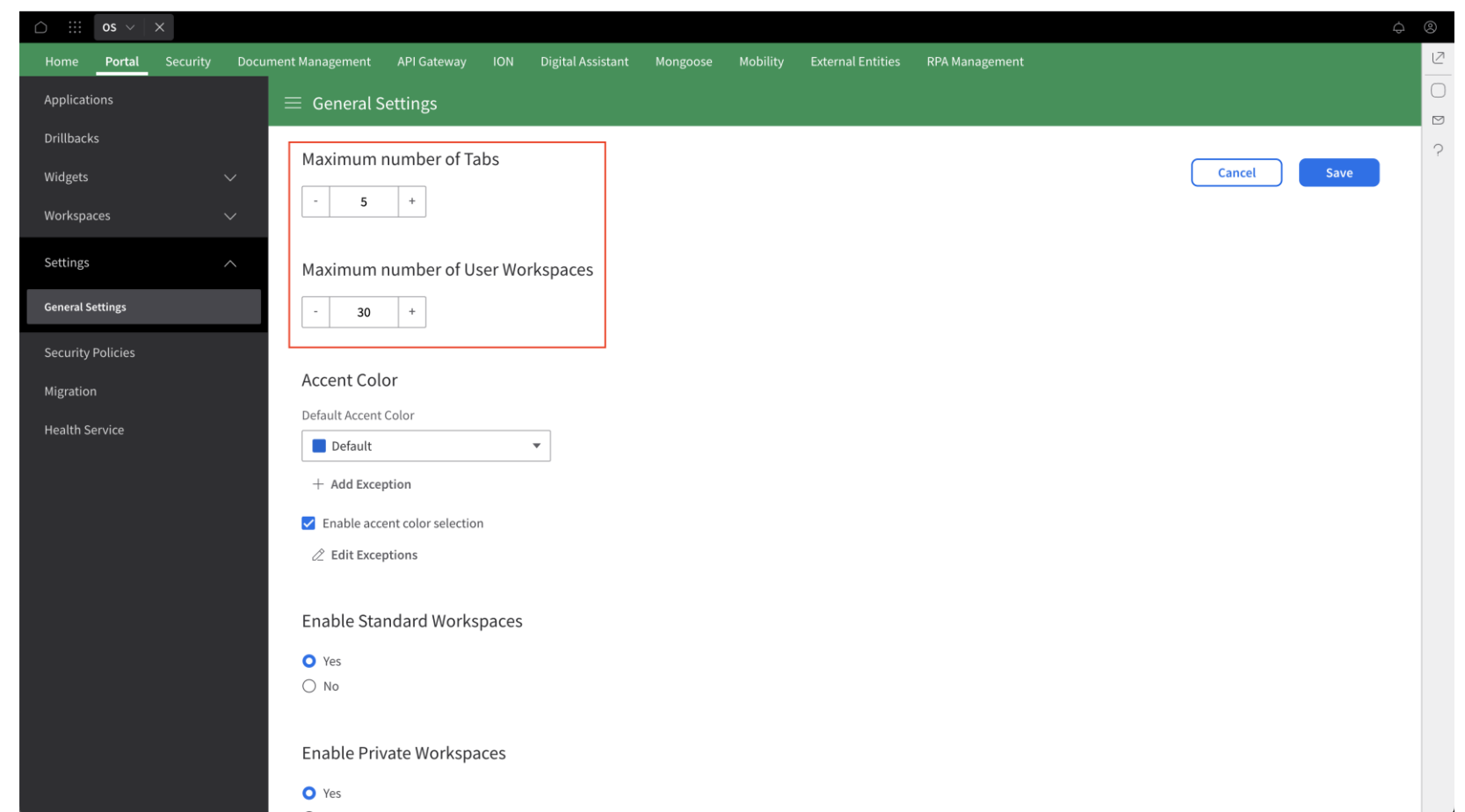
New parameters that determine how many Tabs and Workspaces an end user can have are introduced. Maximum limit is increased to 30.

## Benefit/Value-to-Customer

- Configurability
- Increased limit from 20 to 30

## Use Case

Go to Portal -> General settings.  
Configure the maximum tabs and workspaces you need.

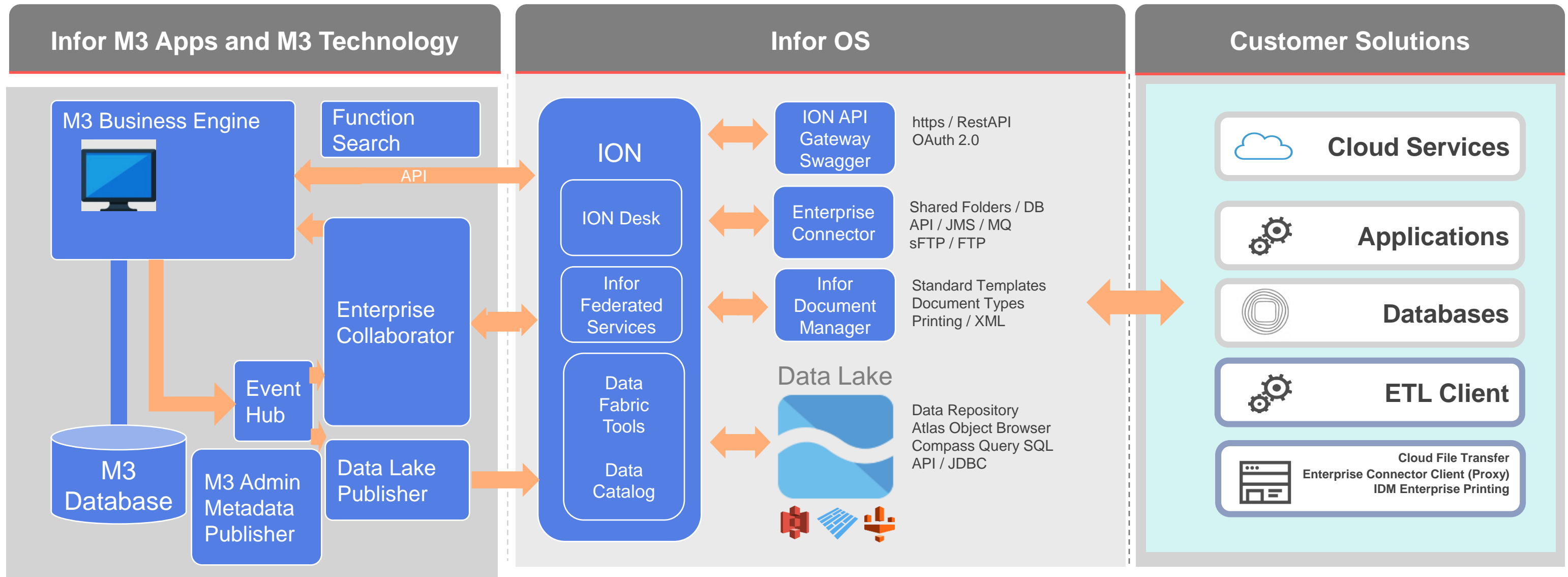


## Deployment Type

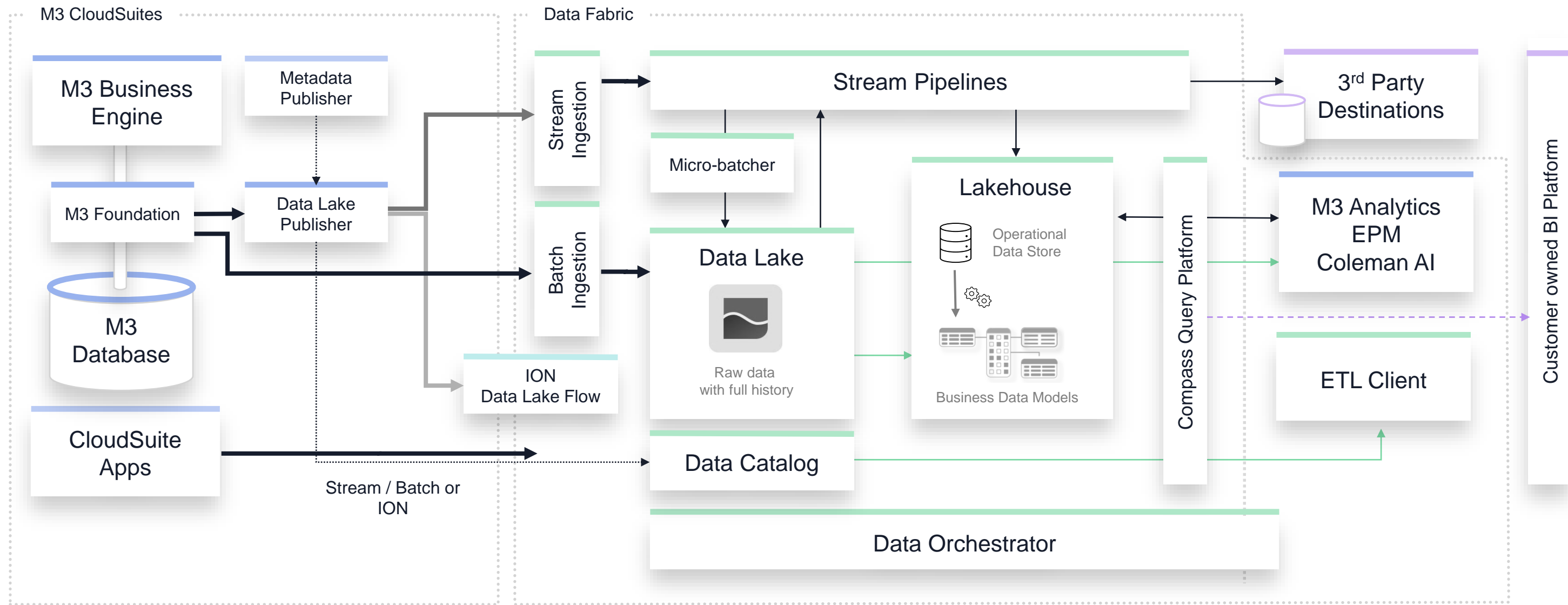
AWS

# M3 CE Integration Architecture

Update Build Publish



# M3 and Data Fabric 2023



# M3 Output Management options



## M3

- Enhance Core M3 apps with Configurable XML
- Unlock new potential and capabilities via Configurable XML
- Configure existing M3 reports & docs
- (DEMO – CMS005)



## IDM

- IDM included with every M3 Cloudsuite
- New advanced formatting possibilities on roadmap
- Built upon a MS Works plugin ((DEMO)
- Excel output option
- Enterprise connector handles printing OnPrem



## OpenText Exstream (OnPrem/Cloud)

- Used for more advanced output options and requirements
- Can run alongside IDM
- OnPrem option can be used as previously with M3 OnPrem
- Cloud option exists, handled by OpenText
- Standard templates delivered by Infor in Storyteller format



## 3<sup>rd</sup> Party Output Solutions

- 3rd party solutions are available
- Possible to share the HTTPS connection
- No certification or support from Infor is available for this option

# Standard Documents & Reports - Business Value

- We convert legacy documents and reports into customizable XML format for M3 CloudSuite
- These XML files are easily customized using configurable settings and managed with Infor Document Management
- Our open architecture supports connectivity with multiple Output Management platforms
- This flexibility lets customers choose the platform that suits their needs
- By using standardized XML files, we help streamline operations for quicker value realization

<https://docs.infor.com/m3udi/16.x/en-us/m3beud/default.html>



# Extension points for custom partner media control

## Executive summary

This enhancement introduces extension points to Xtend M3, enabling customizable partner media control. Users gain precise control over output delivery logic, utilizing document values and diverse fields for tailored multi-channel distribution. While limited to variable fields, this advancement enhances communication flexibility and efficiency, ensuring personalized customer experiences.

## Solution overview

### Problem

Existing partner media control lacked the flexibility needed for personalized output delivery, limiting options for diverse communication needs.

### Solution

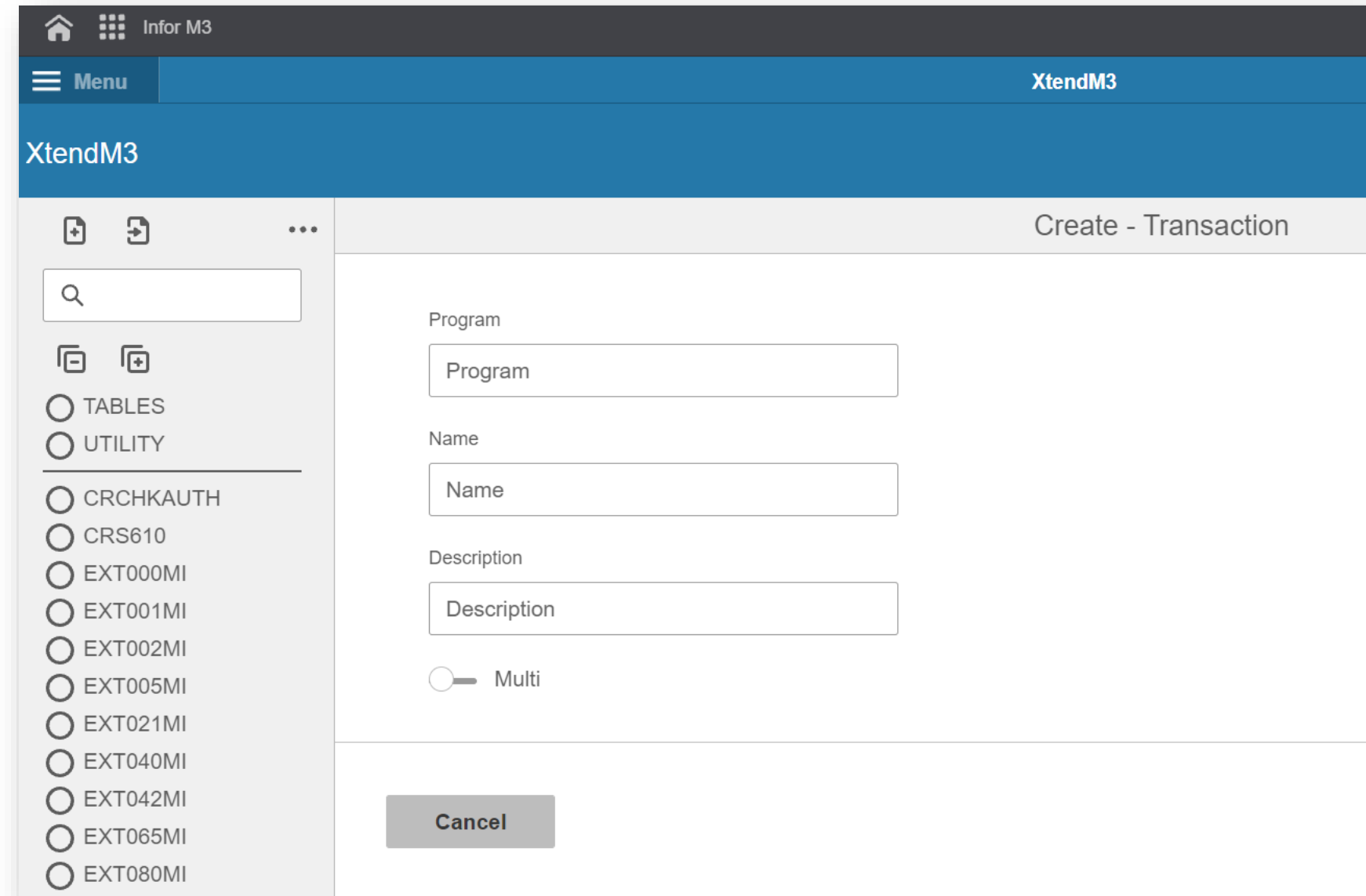
By integrating Xtend M3 extension points, a dynamic solution is introduced. This enables users to finely customize partner media logic based on document values and various fields.

### Benefits

- ✓ This enhancement empowers customers to tailor output delivery precisely.
- ✓ The result is efficient multi-channel distribution, optimizing communication through emails, prints, and EDI.
- ✓ This fosters a unique and tailored customer experience, enhancing communication effectiveness.

Additional details: [KB 2305177](#)

| CloudSuite(s)      | Product Line         | Business Impact | Technical Impact | Decision Persona/Role? | Where to find more information?             |
|--------------------|----------------------|-----------------|------------------|------------------------|---|
| All M3 CloudSuites | M3 Output Management | Medium          | Medium           | End Users              | <a href="#">KB 2275528 Output Master KB</a> |



# Extensibility in M3



## Mongoose

Independent workflow engine to build and deploy applications with integration to ION with no coding knowledge



## XtendM3

Server-side extensibility tool to extend and expand M3 Business Engine with deep integration in M3 ecosystem



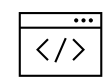
## BaaS

Backend as a Service to build serverless applications with managed lifecycle



## H5 Script

Client-side scripting solution to build personalization around the UI



## App Builder / Web SDK

Client-side web applications to build custom UI based applications



## Custom Field/List/Report

Personalization solution around custom fields and configurable lists and reports in M3

INTRODUCING

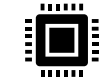
# XtendM3

Customize M3 Business Engine logic with XtendM3 by writing your own Extensions.



Built on top of standard  
M3

Executed either directly or via  
extension points



Groovy Based

Written in Groovy, a Java based  
language



Integrated with existing  
solution

Integrated with APIs, programs  
and resources in M3



Provided as a service

Developed by selected Infor  
consultants or selected partners

Enterprise solutions

# XtendM3

## Architecture Capabilities

- Custom Data Model
  - Transaction data compatibility
- Custom APIs
  - On-Fly new API capabilities
- Custom Batch Programs
  - Run time/transaction intensive in background
- Custom Extensions
  - Customize internal behavior of Business Engine
- Instant impact
  - On-fly activation/deactivation and updates both on extensions and tables

The image is a composite of two parts. The top part shows a mobile device screen with a teal background. It features a circular gauge at the top right with the value '€389,587' and 'Over €300,000'. Below it, the text '75% of Planned 3 Days' is visible. In the center, there are four large white statistics: '50M+' with 'Executions / Day' below it, '3.6K+' with 'Extensions Live' below it, '460+' with 'Tenants Enabled' below it, and '450+' with 'Consultants Trained' below it. The bottom part of the image shows a laptop screen displaying a code editor. The editor has a dark theme and shows a Java class named 'FinalDelivery' extending 'ExtendM3Trigger'. The code includes fields for logger, miCaller, method, program, and session, along with a main method and a finalMODL method. The left sidebar of the editor shows a project tree with 'FinalDelivery' selected.

# Dagens ämnen

Introduktion

Det bästa från M3 Connect – ”Mission impossible”

Huvudpresentation observationer

Arkitektur framtid

M3 Administration

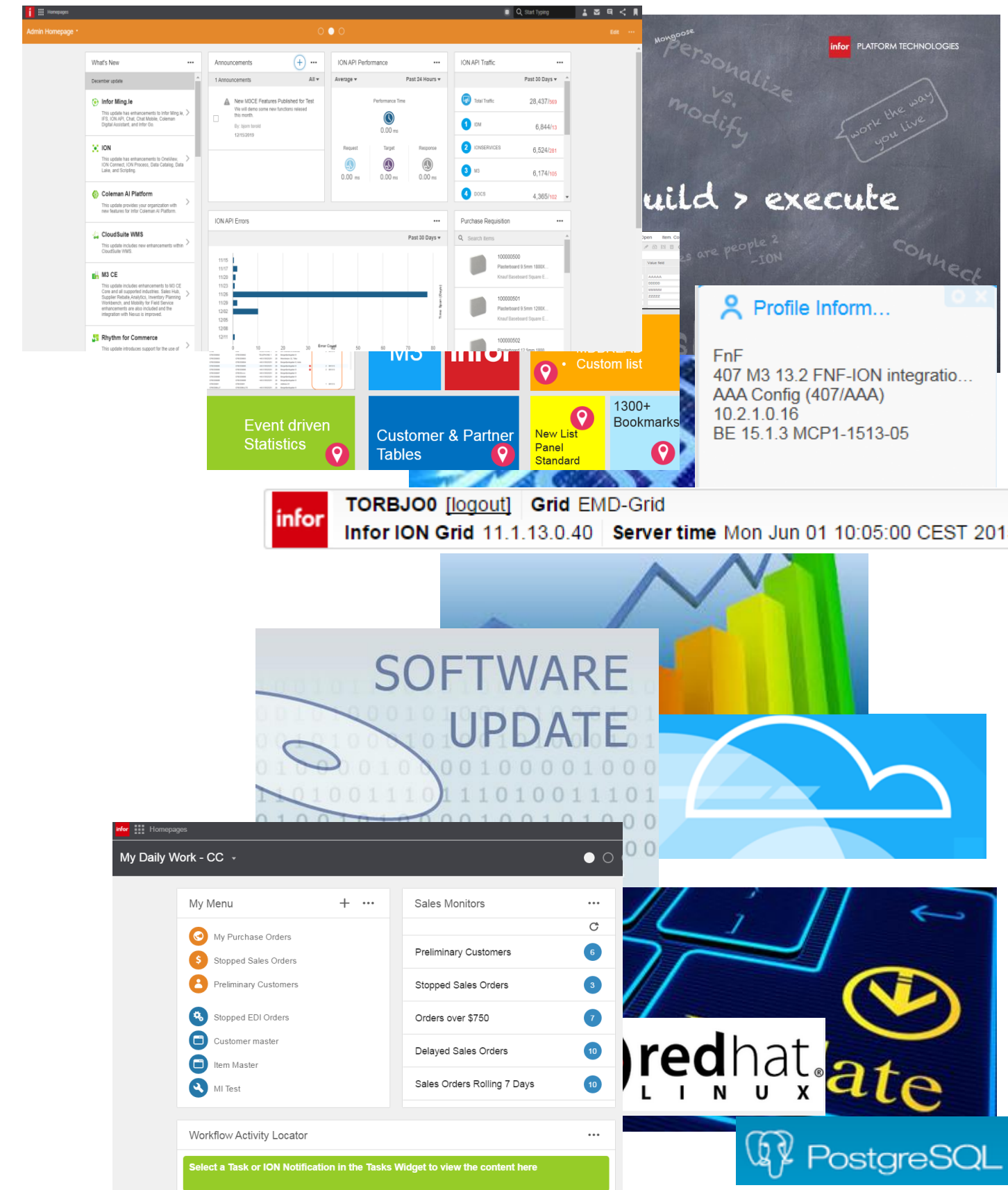
Användarupplevelse

Integrationer

Dokument

Verktyg för kundunika och molnsäkrade anpassningar

Avslutning med frågor och information om nästa Tips&Tricks



Infor M3 Connect

**Thank you**

Questions?

Please reach out to: [Matilde.Thorsoe@infor.com](mailto:Matilde.Thorsoe@infor.com)

[infor.com](https://infor.com)

**infor**

Smart. Preconfigured. Modern.

Copyright © 2023. Infor. All Rights Reserved. [infor.com](https://infor.com)